

## Features

- ❑ Full remote control capability via Embedded Operation channel
- ❑ 2B1Q based multi-rate SDSL access
- ❑ SDSL transmission distance of up to 7.2 Km over 0.5mm single copper pair (noise free)
- ❑ DTE options: V.35 (CT-210), E1 (CT-211)
- ❑ Data rate: Nx64 Kbps(N=1~36)
- ❑ Versatile loopbacks for diagnostics, including V.54
- ❑ Built-in test pattern generator/detector
- ❑ SDSL & E1 line performance monitoring
- ❑ 96-quarter/7-day PM storage
- ❑ Local control via RS-232 management port (VT-100) and LAN port (Telnet access)
- ❑ SNMP management through Ethernet LAN port



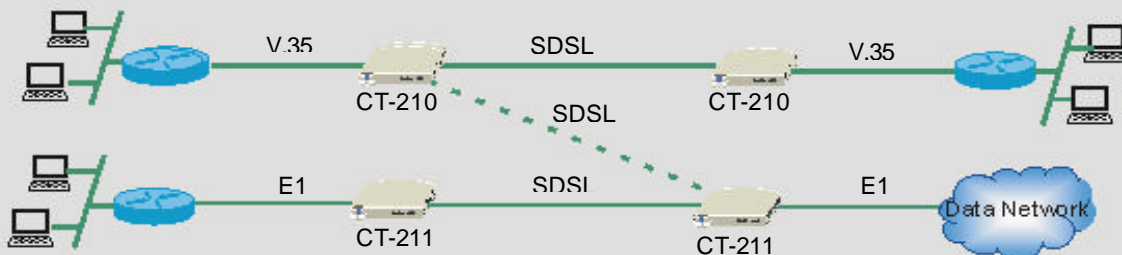
## Description

The CT-210 MSDSL NTU enables symmetric transmission over a single twisted pair of telephone lines. Based on 2B1Q line coding, the CT-210 supports multiple transmission rates ranging from 144 Kbps to 2,320 Kbps. Line rates can be user configured or rate-adapted to line condition. The CT-210 series provides industry standard interface options, which include V.35 (CT-210), or E1 (CT-211). It is suitable for leased line applications such as video conferencing, Internet access, and digital data network (DDN) access, etc.

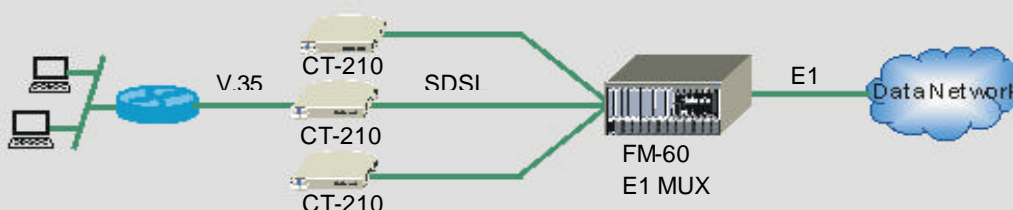
Featuring a powerful remote control capability, the local CT-210 is able to perform configuring, PM monitoring, querying, diagnostics and all maintenance functions on the remote unit via the DSL line. This saves the time and money of on-site visits to customers.

## Applications Diagram

### End- to-End Connection



### Network Access



## CT-210/CT-211 Multi-Rate SDSL NTU

### Specifications

<b>SDSL Line</b>	
Encoding scheme	2B1Q
Media	Single twisted pair
Line rate	144 ~ 2,320 Kbps in 64 Kbps step
Connector	RJ-45 female
<b>DTE option</b>	
V.35 (CT-210)	Interface: V.35
	Data rate: N x 64 Kbps, N=1~36
	Connector: M34, female
E1 (CT-211)	E1 interface: ITU-T G.703, G.704
	E1 line type : both 120 symmetrical and 75 coaxial
	E1 line code: HDB3
	E1 line rate : 2048 Kbps ± 50 ppm
	E1 frame: framed or unframed (Transparent mode)
	E1 payload rate: N x 64 Kbps, N=1~32
	E1 connector: both RJ-48C and BNC are provided
<b>Diagnostics</b>	
Loopback function	DSL, E1
Loopback types	Local Loopback, Remote Loopback, V.54 Loopback
Built-in test patterns	511, 2047, PRBS (2 <sup>15</sup> 1)
<b>Management</b>	
Local interface	RS-232/DB-9 for VT-100
Telnet access	10 BaseT Ethernet port
SNMP management	10 BaseT Ethernet port, Embedded SNMP agent
Remote management	Through EOC
<b>Physical</b>	
Dimensions	242 mm (W) x 60 mm (H) x 167 mm (D)
<b>Power</b>	
Input voltage	AC 110V or 220V, or -48VDC (ordering option)
Power Consumption	5.5 W Max
<b>Environmental Requirements</b>	
Temperature	0 ~ 50 degrees Celsius
Humidity	5% ~ 95% RH (non-condensing)

Note: Specifications are subject to change without notice.



**COMTREND CORPORATION**

3F-1, 10 Lane 609, Chung Hsin Rd., Sec.5, San Chung, Taipei Hsien, Taiwan 241  
Tel: 886-2-29998261 Fax: 886-2-29998497 E-mail: sales@comtrendcorp.com  
<http://www.comtrendcorp.com>

